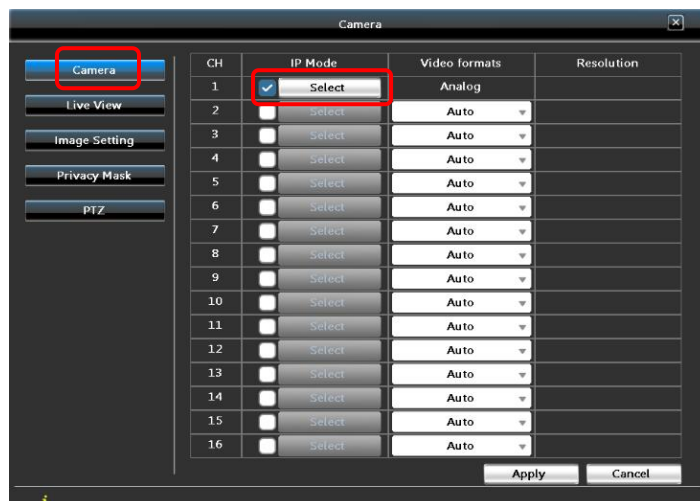


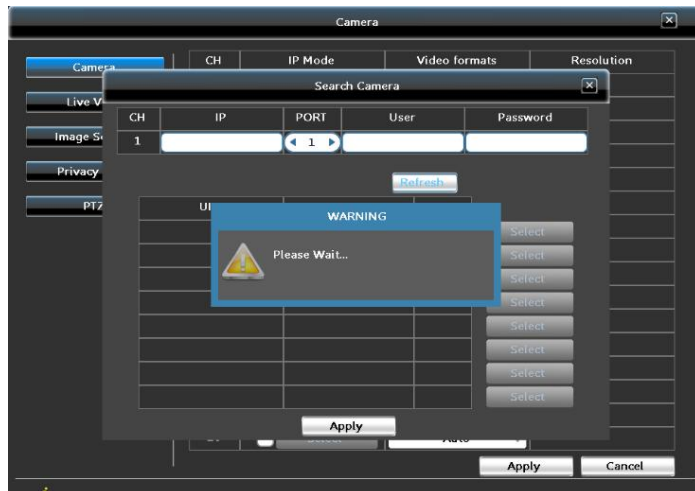
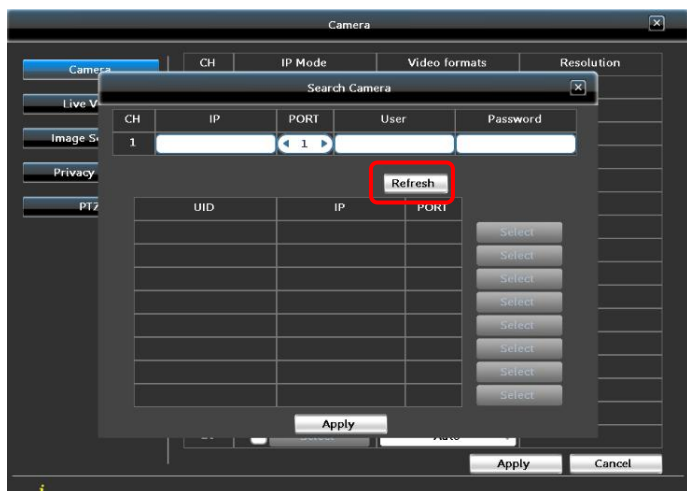
Five Steps to Setup the IP Cameras on TIGERSECU 2MP DVR

Step 1. Connect your IP camera to the Internet, ensure the IP camera and DVR are on the same Network. (Send your IP camera brand and model number to service@tigersecu.com to check the camera compatibility)

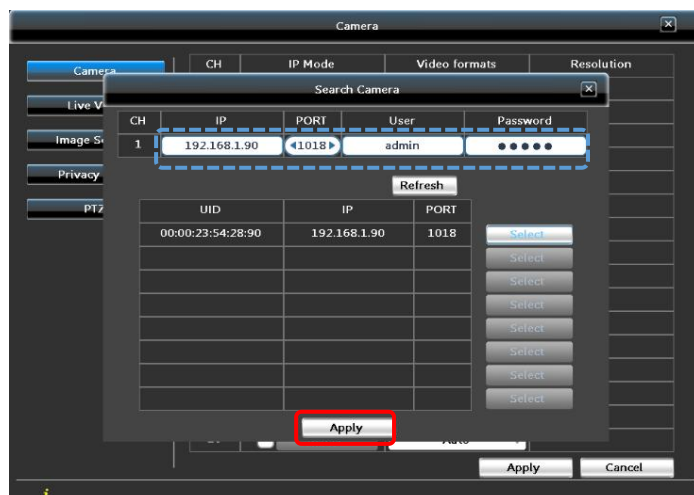
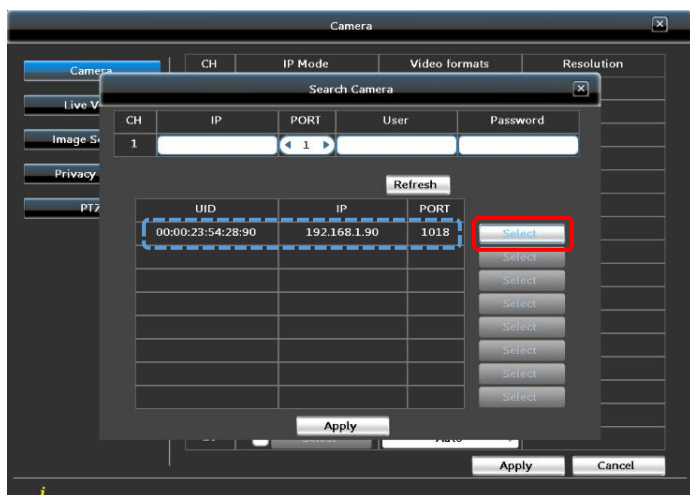
Step 2. Go to DVR Main menu - Camera menu - Camera - **Tick** on IP Mode column - Click **Select**.



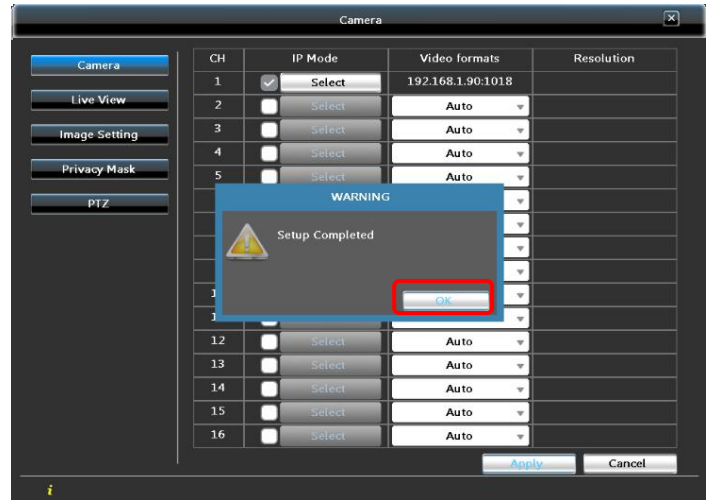
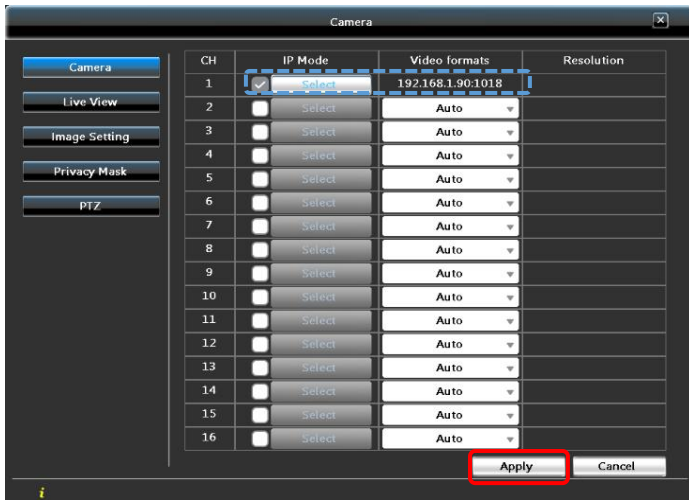
Step 3. Click **Refresh** and wait for a few seconds.



Step 4. The IP camera appears in the list, then click the **Select** button. The selected camera will be auto-filled in the upper blanks. Then click **Apply**.



Step 5. Go back to the camera page, the selected IP camera applied to the channel already. Click **Apply** and **OK** to save the settings.



Enjoy viewing!